

ENSEMBLE:



Can you feel— the love— to-night,



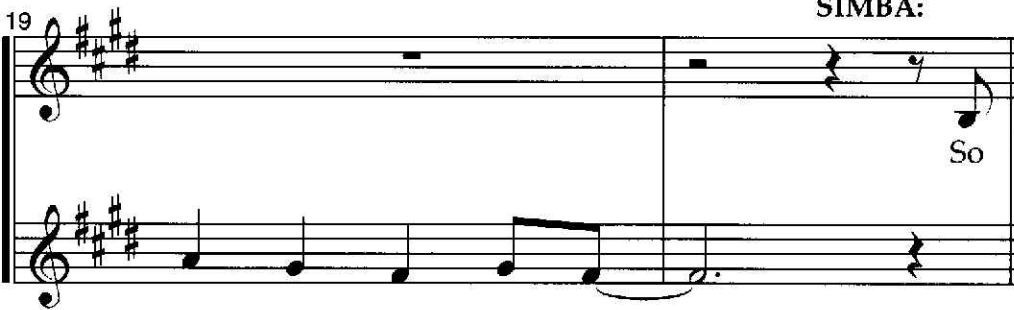
the peace the eve - 'ning brings? The



world, for once, in per - fect har-mo-ny with

(SIMBA and NALA re-enter separately.)

SIMBA:



So

all its liv - ing things.—




ma - ny things to tell— her, but



how— to make her— see the

23 (SIMBA):

 truth a - bout my past? Im-pos - si - ble.

24

 She'd turn a - way from me._____

NALA:


 He's


25


 hold - ing back. He's hid - ing. But

26

 what? I can't de - cide. Why

27

 won't he be— the king I know he is,

28

 the king I see in - side?

ENSEMBLE:
 30

 Can you feel— the love— to - night,

8 (TIMON, PUMBAA): SIMBA:
ku - na ma - ta - ta. Ha - ku - na! It means no
(ENSEMBLE 1):
ku - na ma - ta - ta. Ha - ku - na!
(ENSEMBLE 2):
ku - na ma - ta - ta. Ha - ku - na!

10 wor-ries — for the rest of your days! —

13 ALL:
It's our pro-blem free — phi -

16 TIMON, PUMBAA,
ENSEMBLE 1:
los - o - phy: — Ha - ku - na ma -
SIMBA,
ENSEMBLE 2:
Ha -